

SDL\*



SDL WorldServer

# User Roles who require applets

Role	Applet
Admins	Explorer Workflow Editor Business Rules
Senior Project Managers	Explorer Workflow Editor
Project Managers	Explorer
Support	Explorer
Translators	--
Reviewers	--

The majority of users do *not* need to interact with the applet functionality

# Applet replacement plans 1

## Short-term workaround:

With WorldServer 11.1 we converted the Explorer applet to run as a JNLP application

Explorer functionality runs outside of the browser

Allows user to continue to work in any browser

Still requires Java on the desktop

Not an elegant long-term answer

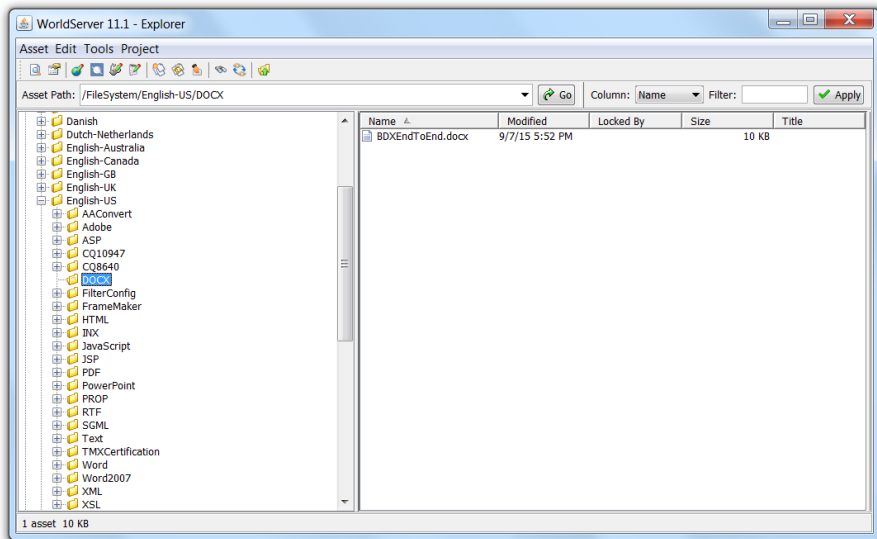
# Explorer as a JNLP application



**Explorer** p Explorer

[Click this link to download and launch Explorer using Java Network Launch Protocol.](#)

Select one or more folders or assets and use the menus or toolbar buttons to choose the action you want to perform. [More info...](#)



# Applet replacement plans 2

## Long-term solution:

Migrate some functionality to new UI

Re-implement other applet functionality in web-neutral technology

Explorer functions are better located in the Project pages

Workflow editing, Business Rule definition, Linkage will be redone as HTML5

# Mock-up of Explorer Upload in Project Group page

The screenshot displays a software interface for managing tasks. At the top, a dark header bar contains a 'Tasks' menu and a user profile 'Admin'. Below this is a toolbar with various icons: Claim, Unclaim, Include Cost, Exclude Cost, Edit / Translate, Import, Export, Complete Step, Cancel Task, Task Options, Download, and Upload. A green rectangular box highlights the 'Download' and 'Upload' buttons. The main content area shows a project group 'Ray 3 (English-UK -> German (Germany))' with a 'Task Info' table. The table has columns for 'Task Info' and 'Target Locale'. A single task is listed with a German flag, 'Admin', '1', 'Translate (6)', and a file icon labeled 'Caution2.xml'. On the left, a sidebar provides project details: Total Progress (10%), Reviewed (10%), Pending Review (0%), In Progress (0%), Untranslated (90%), Name (Ray 3), ID (1132), Creation Date (12/23/2016 12:03 PM), Source Locale (English-UK), Target Locale (German (Germany)), Workgroup (default), Scoping Mode (Studio-aligned), Client (Simple Client), and Description.

Tasks

Admin

Claim Unclaim Include Cost Exclude Cost Edit / Translate Import Export Complete Step Cancel Task Task Options Download Upload

Claim/Unclaim Cost Translate Import/Export Tasks Task Options Assets

Projects Ray 3 (English-UK -> German (Germany))

Project Group Informat... View: all tasks Auto Refresh

Ray 3 (English-UK -> German (Germany))

Task Info	Target Locale
<input checked="" type="checkbox"/>	German (Germany) Admin 1 Translate (6)  Caution2.xml Admin, Laurent Pierret, Editors, Administ

Total Progress 10%

Reviewed 10%

Pending Review 0%

In Progress 0%

Untranslated 90%

Name Ray 3

ID 1132

Creation Date 12/23/2016 12:03 PM

Source Locale English-UK

Target Locale German (Germany)

Workgroup default

Scoping Mode Studio-aligned

Client Simple Client

Description

Displaying 1-1 of 1 Page 1 of 1 Show 20

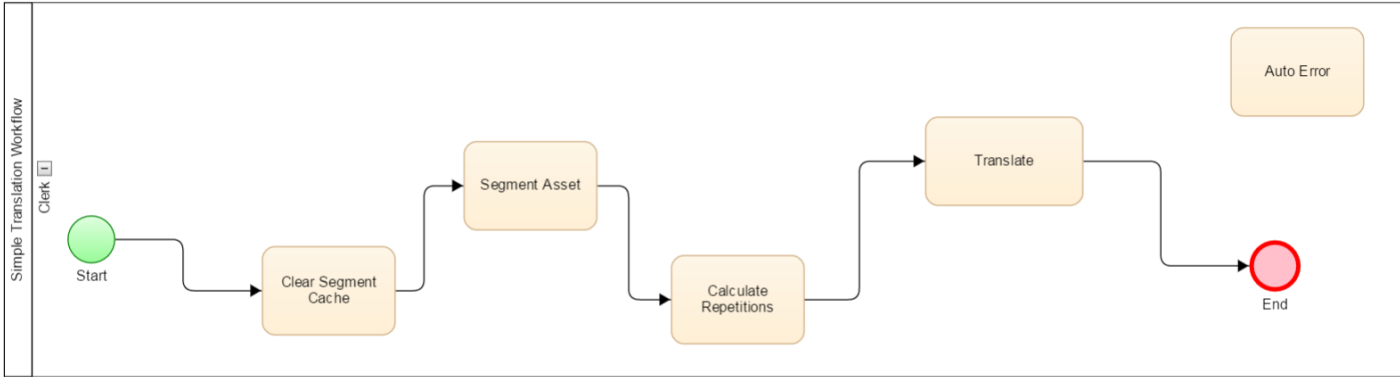
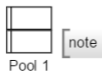
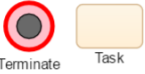
Show Task Info

# Mock-up of HTML & JS Workflow Designer

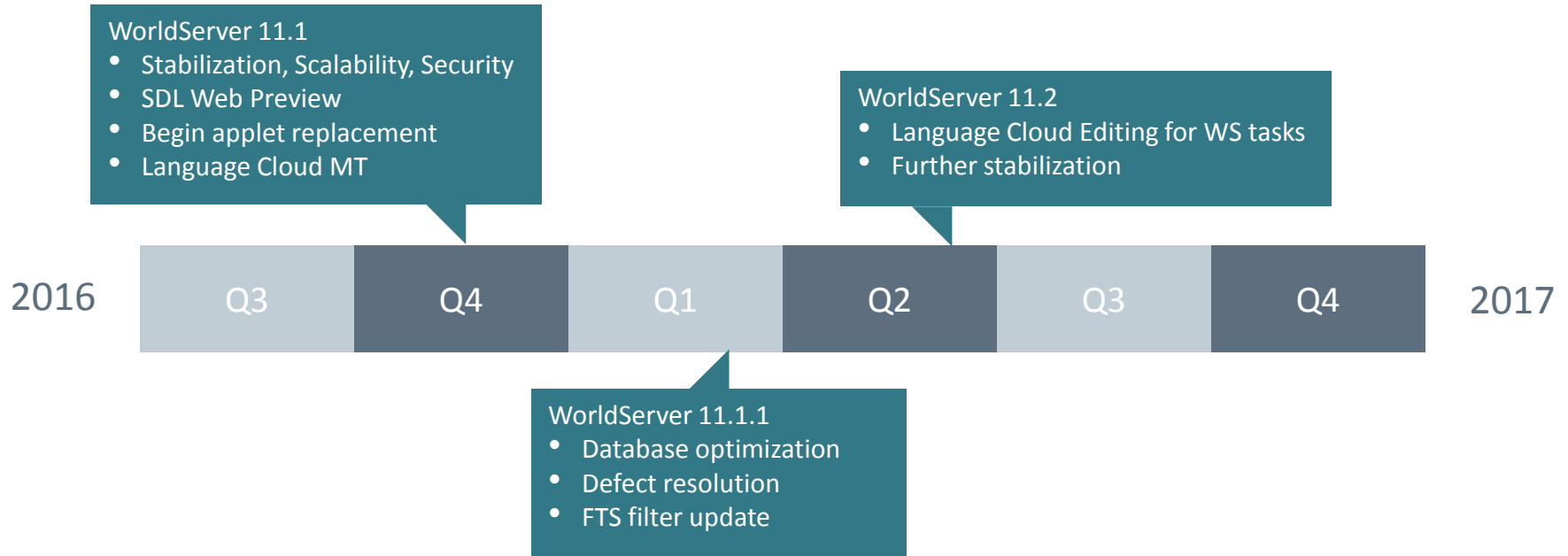
Test1

File Edit Align Space Options

Level 1 items

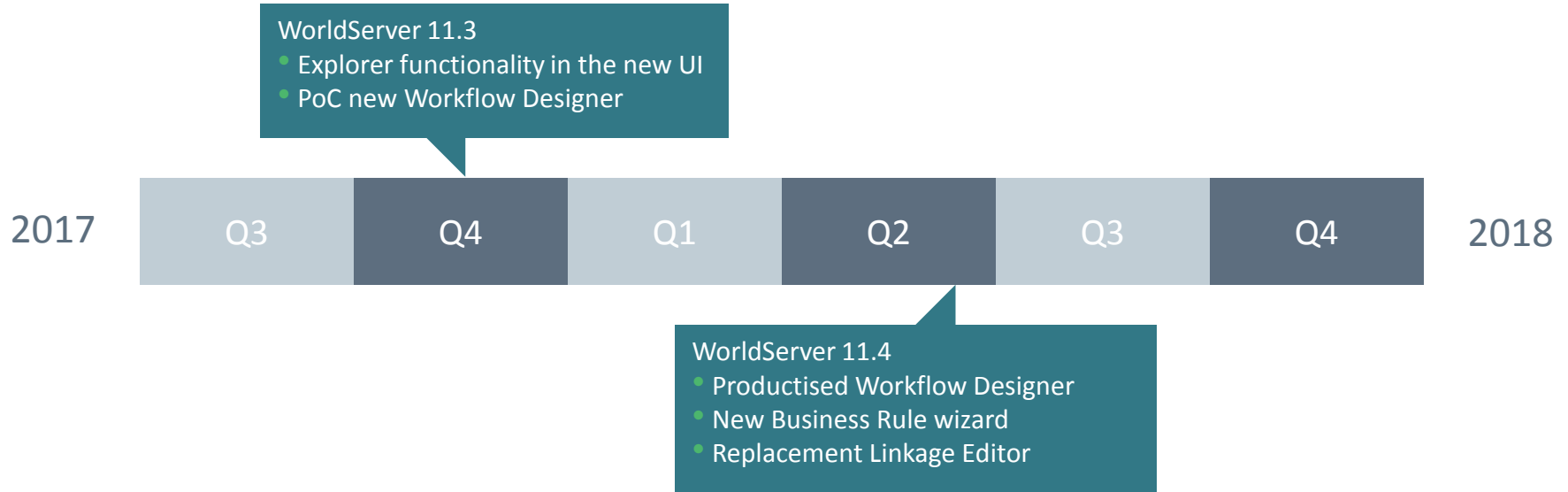


# SDL WorldServer 11.x - Timeline 2016-17





# SDL WorldServer 11.x - Timeline 2017-18





## Software and Services for Human Understanding

Copyright © 2008-2017 SDL plc. All rights reserved. All company names, brand names, trademarks, service marks, images and logos are the property of their respective owners.

This presentation and its content are SDL confidential unless otherwise specified, and may not be copied, used or distributed except as authorised by SDL.