

☆ Running a "repair"

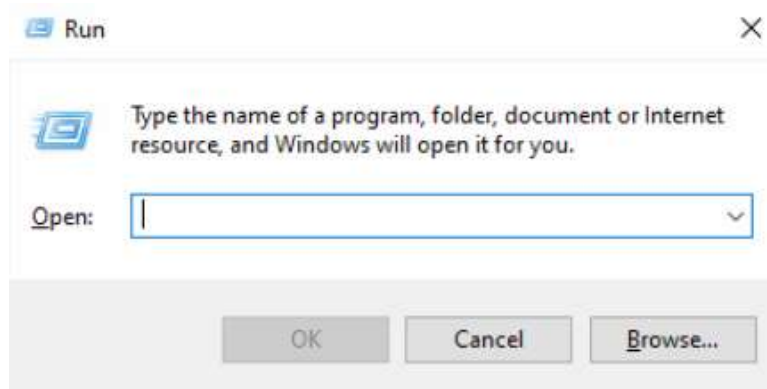
06 November 2020 15:14

As any other Windows application, SDL Trados Studio can be "repaired". This is done for example when you experience problems with the software and don't know what the cause and the remedy is. Running a "repair" can sometimes solve this type of problems. In essence, this function is an abbreviated "installation" in that it checks if all components are valid and if necessary replaces them by the correct version. It also reverts some of the configuration settings.

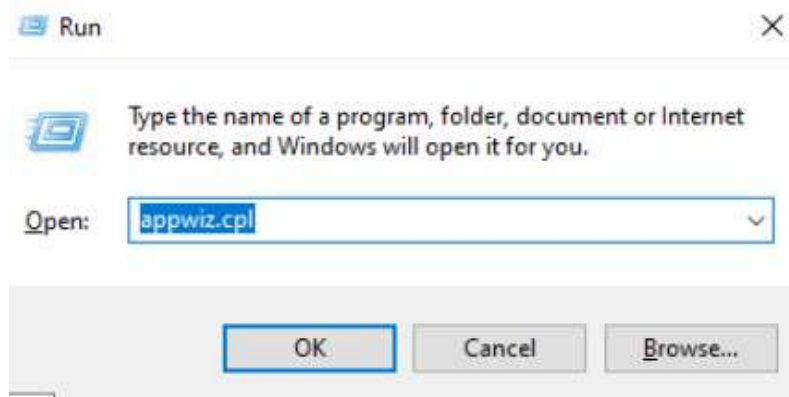
Another situation where a "repair" needs to be run is when you installed a newer major version of the software (e.g. Studio 2021), but still want the older version (Studio 2019) to be used as the default application. The repair will reset the file extensions associations such as .sdlppx, .sdlrpx, .sdlproj, ... to launch the version of the software you ran the repair for (in this case 2019).

How do you run a "repair"?

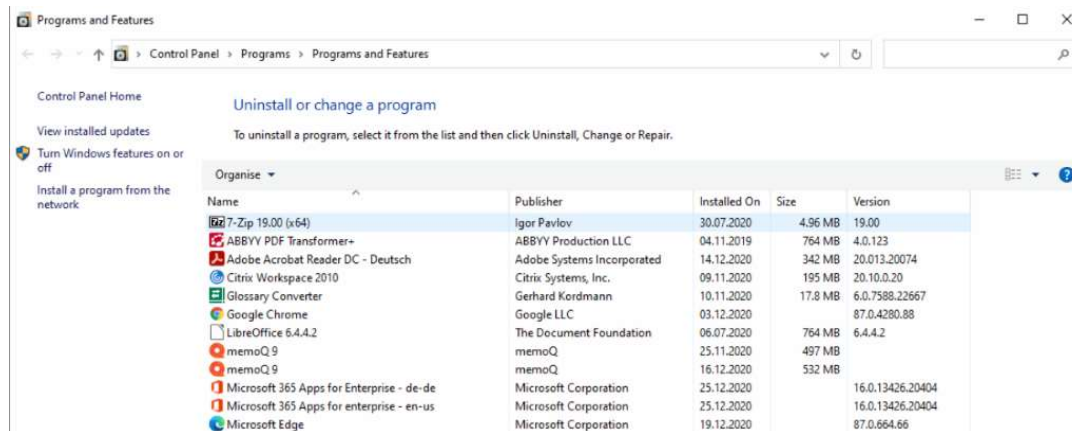
The fastest way is to hit **Windows key + R**. This will open the window below:



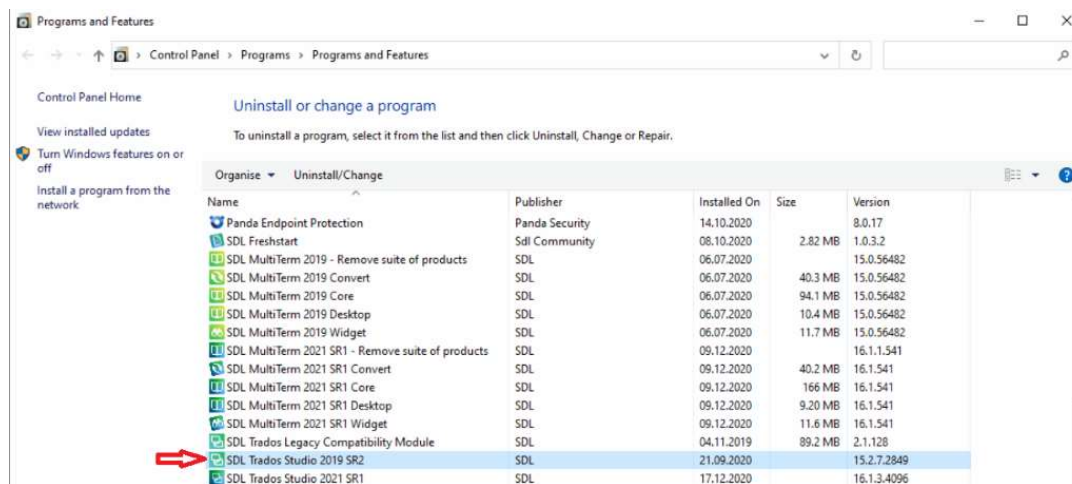
In the field "Open", type "appwiz.cpl" and hit the Enter key or click on "OK":



This will open the window "Programs and Features":



In this window, scroll down until you find the program you want to repair, e.g. "SDL Trados Studio 2019 SR2":

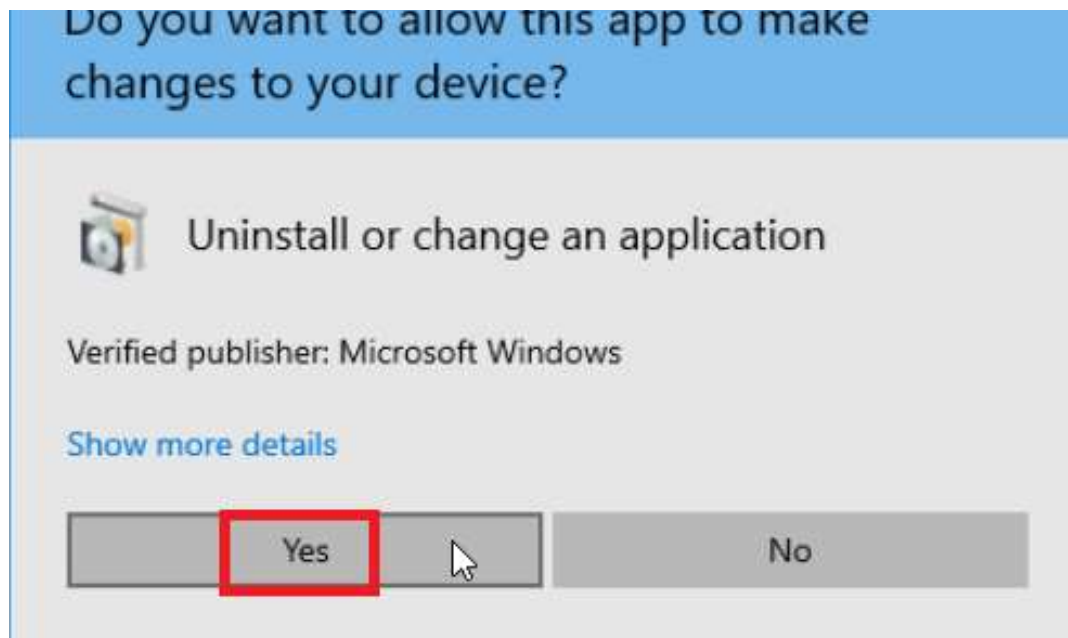


Right-click on the selected line:

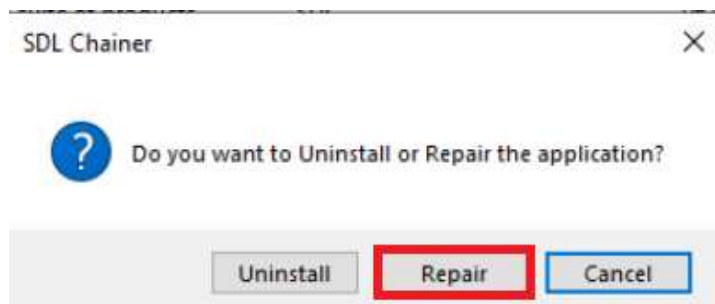


Click on "Uninstall/Change" (don't worry, this will not uninstall the program):

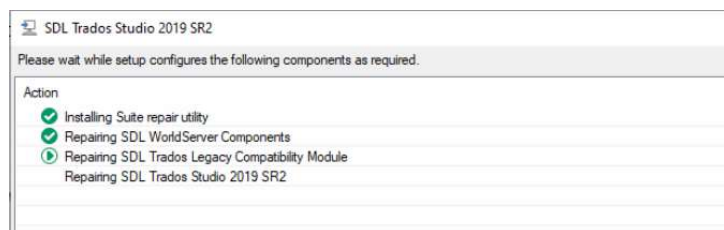




This will show the following prompt:



Now, click on "**Repair**". This will launch the repair process, which will take a while:



Once the repair has finished, the following window will show up:



Setup has completed successfully.

OK

Click on "OK". Now, you can use the software again.

