

Mercury Triton

Release Notes

19 May 2021

Table of Contents

Table of Contents	1
New Features	1
Notes	3
DTP workflow	4
Preprocessing	4
Postprocessing	5

New Features

1. (MER-3) Integration with Auth0.
 - a. For security purposes, your SDL ID must be used to log into Mercury.
 - b. Your Mercury account will be created automatically on first login.
 - c. (MER-228) Certain users can be flagged as administrators, with the ability to manage program information such as product assignments between BB8 and SymLite. These options are hidden from non-administrator users.
 - d. (MER-70) Users are redirected to the Mercury login page after logging out.

2. (MER-38) A project dashboard is available, with an overview of all projects in Mercury.
 - a. (MER-98) Projects can be filtered by [Project ID](#), [Received Date](#), [Due Date](#), [Product](#), [Project Type](#), [Component Type](#), [Assigned Vendor](#) and [Urgency](#).
 - b. (MER-62) The [Project ID](#) filter searches in both the [Short ID](#) and [Project ID](#) fields.
 - c. Projects appear in a table with multi-select, displaying the [Project ID](#), [Title](#), [Product](#), [Project Status](#), [Component Type](#), [Urgency](#), [File Type](#) (identifying DTP projects), the [Assigned Vendor](#) (fSDL or fMoravia) and the [Received Date](#) of the project.
 - d. (MER-125) The [Project Status](#) displayed on the dashboard is the status of the earliest PLP of the project. For example, a project with two source files where one has been preprocessed will remain in status IN_PREPROCESSING until the preprocessing of the second source file has been completed.
 - e. (MER-43) Users can select the page size (number of projects) to display at a time.
 - f. (MER-128) Users can page backwards and forwards to browse projects.
 - g. (MER-99) Projects can be opened on the same or a different browser tab by selecting the project link or the icon next to the [Project ID](#).

3. (MER-39, MER-63, MER-64) A [Project Details](#) page is available for the centralized management of DTP projects. General project information displays, as well as functionality to manage preprocessing and postprocessing tasks.
 - a. (MER-120) The [Project ID](#) is the browser tab name for easy identification when managing multiple projects.

- b. (MER-109) A formatted copy for the [Questions & Answers Instructions](#) is available for pasting into ERF.
 - c. (MER-207) The project [Title](#) can be copied into the Windows clipboard.
 - d. (MER-247, MER-248) Columns can be filtered and sorted to quickly identify specific PLPs.
 - e. (MER-68) The [Project Status](#) displayed on the [Project Details](#) page is the status of the earliest PLP of the project. For example, a project with two source files where one has been preprocessed will remain in status IN_PREPROCESSING until the preprocessing of the second source file has been completed.
4. (MER-20) Mercury sends email notifications when a DTP project arrives in preprocessing stage, and on project updates.
5. The preprocessing stage for DTP projects can be managed through Mercury.
 - a. Documents are automatically matched to the corresponding source or as reference files based on file name.
 - b. (MER-172) Reference files can be uploaded for DTP projects, that are available to subsequent linguists from Polyglot. Any non-source file is automatically considered a reference file. Reference files are displayed in the [General Information](#) section, from where they can also be downloaded.
 - c. (MER-275) Reference files deleted from Mercury until the preprocessing stage is complete.
 - d. (MER-213) Empty reference files cannot be added to projects.
 - e. (MER-44, MER-65) Preprocessed files can be previewed in Polyglot via a direct link from Mercury. If changes are required, simply upload a new file and the preview becomes available once more.
 - f. (MER-84, MER-118) The [Postprocessing Duration](#) is entered by the user when uploading the preprocessed files. The same duration is applied to all files; if there is a need to enter a different duration for different files, those files can be uploaded separately, and the new duration entered.
 - g. (MER-66) PLP statuses can be changed in bulk.
 - h. (MER-80) If files are uploaded from the dashboard, the user is prompted to open the details page.

6. The postprocessing stage for DTP projects can be managed through Mercury.
 - a. (MER-173) PLPs reach the postprocessing stage as each PLP becomes available, rather than when the full project is ready for postprocessing, eliminating potential delays due to single languages.
 - b. (MER-122) The [Project Details](#) page refreshes automatically when a postprocessed file is submitted to Google.

7. (MER-119) Mercury will extract preprocessed or postprocessed documents from a zip file and automatically match or add reference files based on the file names.
 - a. Preprocessed file names are matched up to the first period (.) and then based on the final extension of sdxliff.xlf, .xliff and .xlf.
 - b. Any non-matched document at the preprocessing stage is considered a reference document.
 - c. (MER-83) Postprocessed documents are matched automatically to the proper source document based on the document name and file type. If the project document is [documentA.ext](#) and the language is [ab-CD](#), the document [documentA_ab-CD.ext](#) is automatically matched.

8. (MER-105, MER-124) If Google returns an error when a preprocessed or postprocessed document is submitted, an error message displays and the precise error message is available as a tooltip from the [Project Details](#) page.

Notes

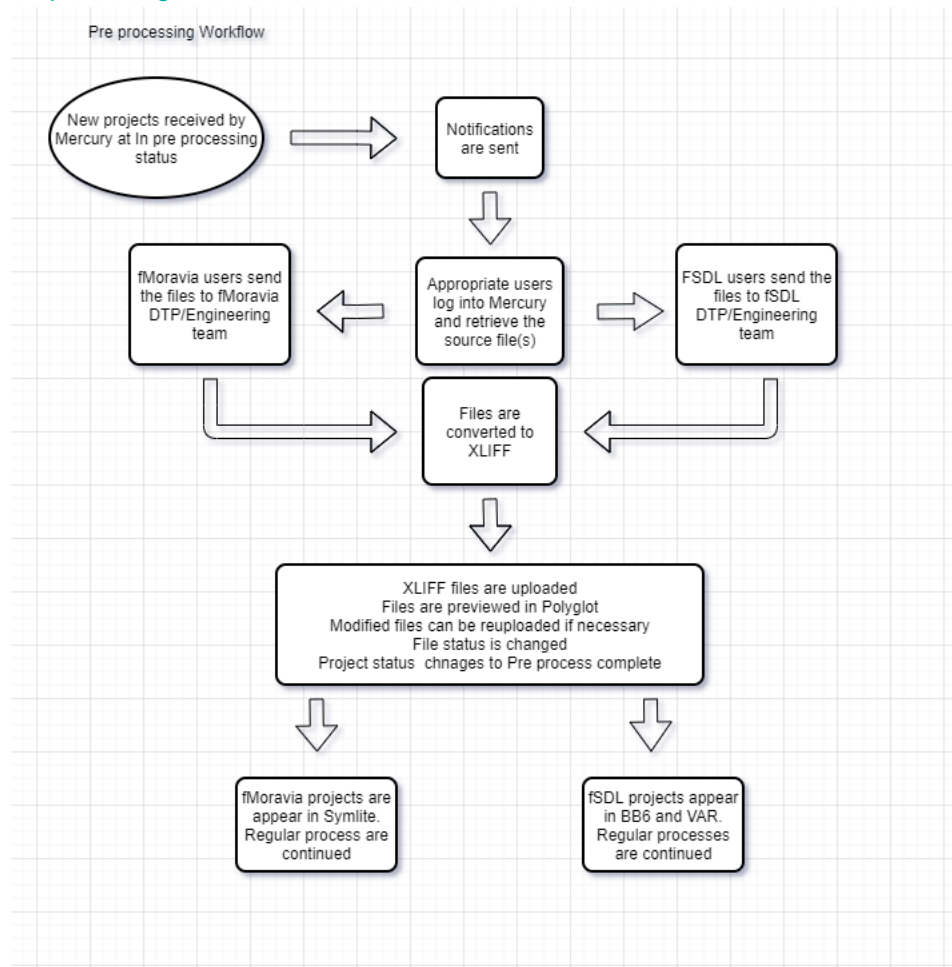
9. Once reference files for DTP projects have been submitted to Google when the preprocessing stage is complete, they can no longer be deleted.

10. PLPs are not created until the preprocessing step of the project is complete.

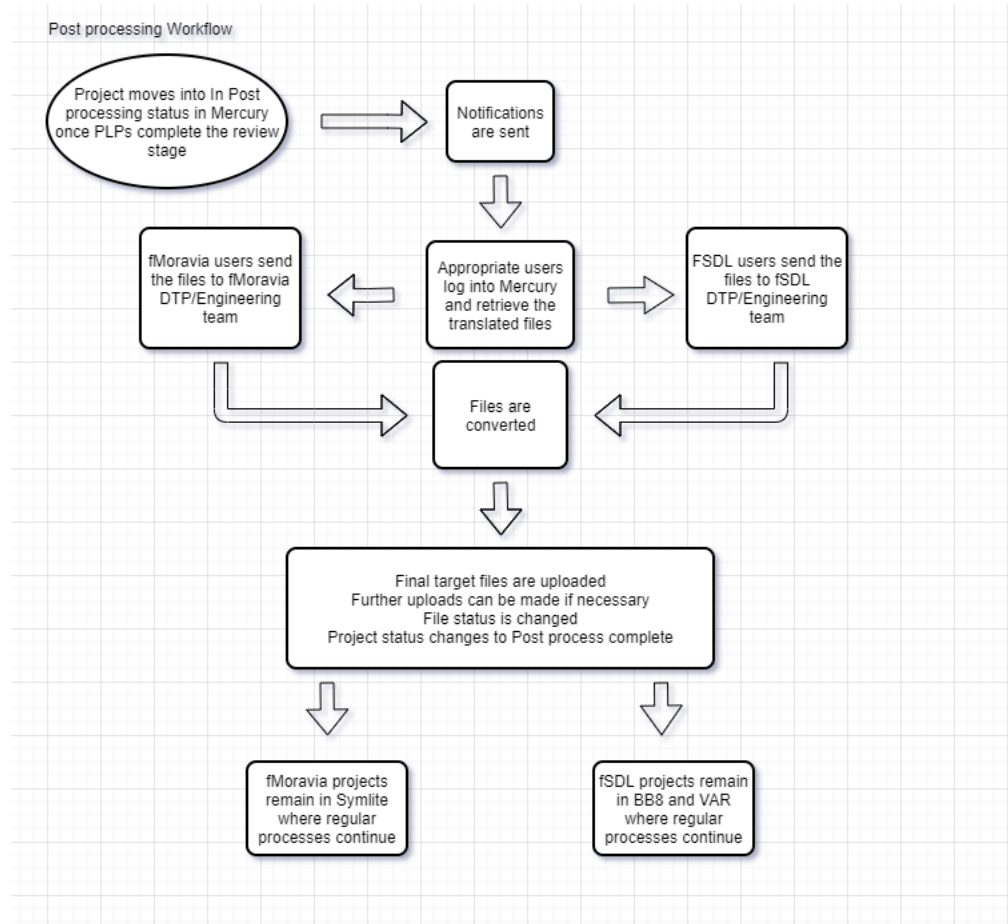
11. Only a single document, of the same file type as the source document, can be uploaded per source document in the postprocessing stage.

DTP workflow

Preprocessing



Postprocessing



About RWS

RWS Holdings plc is the world's leading provider of technology-enabled language, content management and intellectual property services. We help our customers to connect with and bring new ideas to people globally by communicating business critical content at scale and enabling the protection and realization of their innovations.

Our vision is to help organizations interact effectively with people anywhere in the world by solving their language, content and market access challenges through our collective global intelligence, deep expertise and smart technology.

Customers include 90 of the globe's top 100 brands, the top 10 pharmaceutical companies and approximately half of the top 20 patent filers worldwide. Our client base spans Europe, Asia Pacific, and North and South America across the technology, pharmaceutical, medical, legal, chemical, automotive, government and telecommunications sectors, which we serve from offices across five continents.

Founded in 1958, RWS is headquartered in the UK and publicly listed on AIM, the London Stock Exchange regulated market (RWS.L).

For further information, please visit: www.rws.com

© All Rights Reserved. Information contained herein is deemed confidential and the proprietary information of RWS Group*.
*RWS Group shall mean RWS Holdings PLC for and on behalf of its affiliates and subsidiaries.